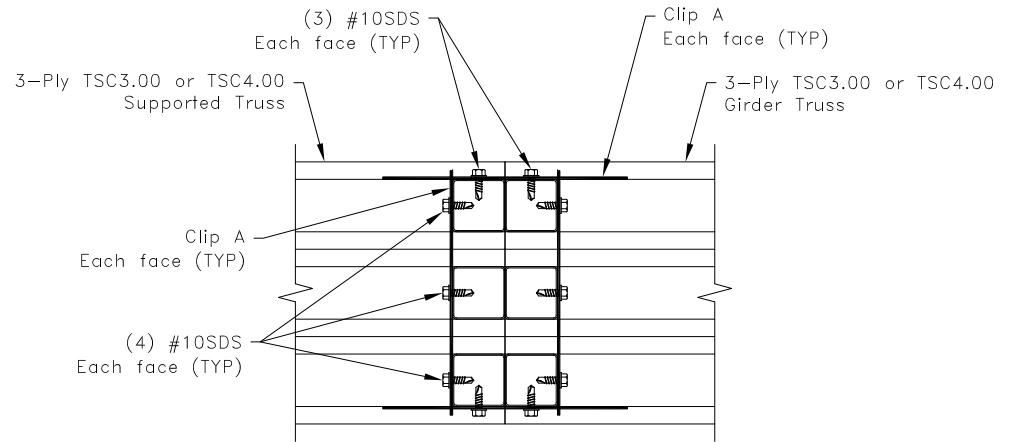
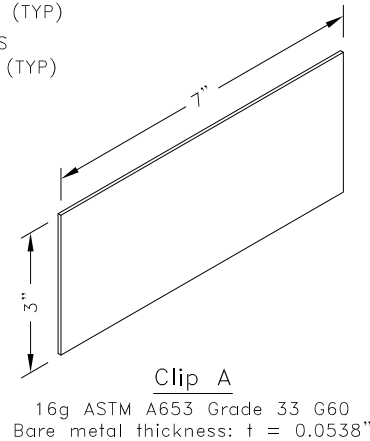


$$R_v = U = 2500\#$$



General Notes:

1. SDS = Self-Drilling Tapping Screw
2. Screw end distance and edge distance is $9/32"$ minimum. Screw spacing is $9/16"$ minimum.
3. For clips connecting to a Z-web vertical refer to TS068 for connection area.
4. R_v refers to vertical reaction and U refers to uplift.
5. Cold-Formed Steel Calculations are per the 2010 addendum to the AISI 2007 "North American Specifications for the Design of Cold-Formed Steel Structural Members" (S100-07/S2-10).

TrusSteel®

www.TrusSteel.com

Florida: 2400 Lake Orange Drive, Suite 150 / Orlando, FL 32837 / (800) 755-6001
Missouri: 13389 Lakefront Drive / Earth City, MO 63045 / (800) 326-4102

Truss-to-Truss In-Plane Connection

ITW Building Components Group, Inc. shall not be responsible for any performance failure in a connection due to a deviation from this detail. Any variation from this detail shall be approved in advance by ITW Building Components Group, Inc.

Custom Detail:

CD130514

Date:

06/11/13

Custom Detail Category:

Truss-to-Truss Connections